

GRID NORTH



**NOTES:**

The accuracy and content of this drawing are dependent on the original specification and EMP should be consulted before use at other scales.  
Where underground services are shown, all reasonable care has been taken within the original specification and requirements. Before use of this information the user should satisfy themselves of the completeness and accuracy of such detail and consult EMP before undertaking any works. Due to the nature of this work and limitations imposed by ground conditions and the detection equipment, no guarantee can be given that all services have been recorded. PAS128 Type A Trial Holes/Excavations should be dug at critical locations.  
Our aim is to produce the best possible results for our clients, within the agreed specification and cost constraints. All reasonable care has been taken in the survey detail represented on this drawing. Any discrepancies must be reported immediately to EMP and any other comments or feedback is most welcome.  
Levels shown at kerbs are channel level unless stated.

**Control:** All levels and co-ordinates are related to the datums described.  
The horizontal and vertical control of this survey is based on the Ordnance Survey National Grid and level datum via Network RTK GPS.  
We have applied no reverse scale factor to this survey.

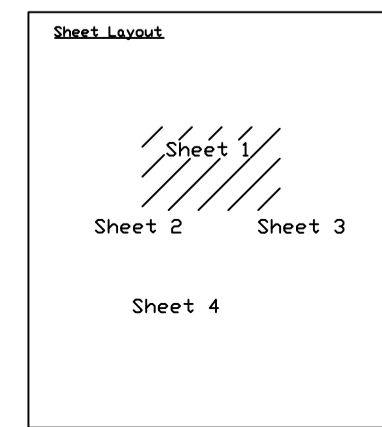
Original Drawing Size: A1

**LEGEND**

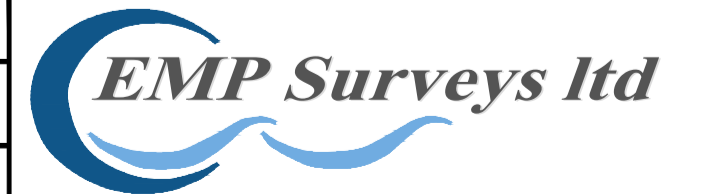
- |   |   |   |  |  |
|---|---|---|--|--|
| <b>Features:</b><br>ACD Drainage Channel<br>AV Air Valve<br>AB Air Brick<br>RM Road Meter<br>BOD Blocked<br>BOB Borehole<br>BS Bus Stop<br>RT Road Traffic<br>RVP Rain Water Pipe<br>C/C Cable TV Cover<br>C/L Cable TV Cover<br>D/C Drop Kerf<br>DPC Damp Proof Course<br>E/C End of Trace<br>EN Earth Rod<br>FH Fire Hydrant<br>ER Electricity<br>FL Flat Roof<br>GV Gas Valve<br>GUY Gully<br>IC Inspection Cover<br>IL Invert Level<br>J/S Junction Box<br>KO Kerb Outlet | <b>Surfaces &amp; Finishes:</b><br>BR Brick<br>CB Concrete<br>CLT Concrete<br>C/P Concrete Paving Slabs<br>I/B Iron<br>L/NO Linoleum<br>P/W Parquet<br>R/PA Resilient<br>T/T Tarmac<br>W/W Wood<br>W/P Waste Pipe<br>W/MF Wire Mesh Fence | <b>Boundary Types:</b><br>BW Barbed Wire<br>CB Concrete<br>CI Chainlink<br>C/F Corrugated Iron<br>C/P Chestnut Paving<br>IR Iron<br>K/L Kettle<br>L/L Larch<br>PA/P Path<br>P/W Post & Wire<br>T/W Timber Decking<br>W/WF Wire Mesh Fence | <b>Services:</b><br>C/SV CATV cables<br>C/SW Combined Sewer<br>C/D Data cables<br>E/C Electric cables<br>F/W Fuel water<br>G/P Gas pipes<br>E/E Empty duct<br>S/W Storm water<br>T/CB Telesom cable<br>U/U Unidentified<br>W/P Water pipes<br>O/L Overhead Lines<br>D.64 Service depth | <b>Survey Station</b><br>Fence<br>Gate<br>Painted Road Markings<br>Edge of Vegetation<br>Kerb/Drop Kerb<br>Tree<br>Banks<br>Building<br>Overhead Building Detail<br>Wall |
|---|---|---|--|--|

Station	Easting	Northing	Height	Description
114	247260.0	113250.0	113.25	Level Peg
115	247265.0	113250.0	113.25	Level Peg
116	247270.0	113250.0	113.25	Level Peg
117	247275.0	113250.0	113.25	Level Peg

Quality Level	Description
OK	A utility is expected to exist but cannot be detected (AOI Assumed route)
Q1	No data information 'N/A'
Q2 (Post Processed)	Horizontal location only using one geophysical technique eg EM or Radar
Q3 (Post Processed)	Horizontal and vertical location only using two geophysical techniques eg EM and Radar
Q4	Service verified in an open excavation, inside an inspection chamber, from a pit or at the ground surface the service entry / exits the ground. Visually confirmed



Job No.	1118	Surveyor	M. Cable	Checked	M. Wood	Date	Aug 2024	Scale	1:200
Drawing No.	1118/T&S/01-04								
Revision									
Rev	Job No.	Date	Revision Detail	Surveyor	Checked				



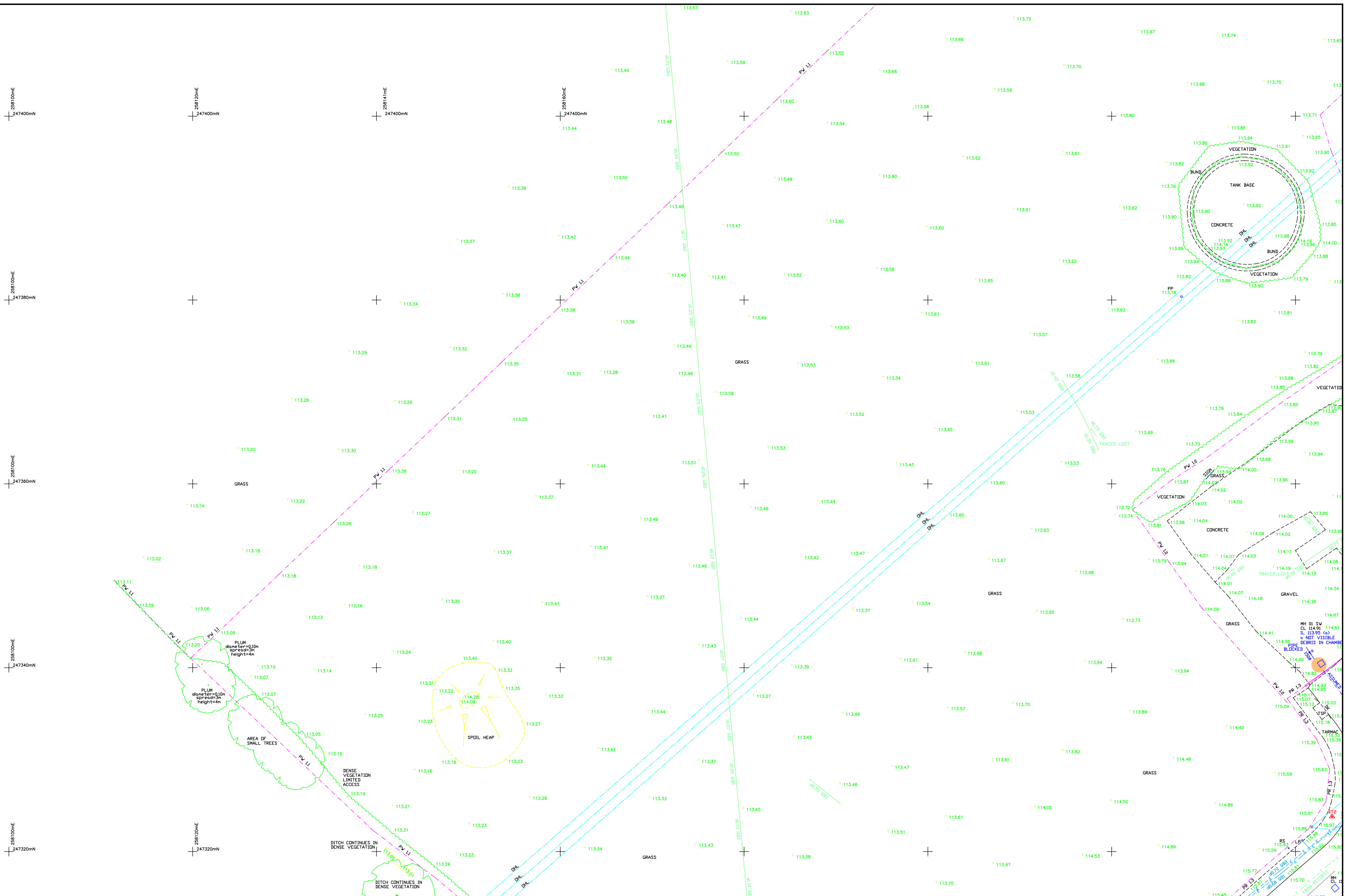
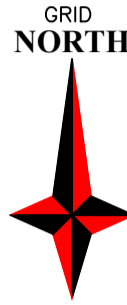
**CLIENT DETAILS**  
Lidl  
Waterton Industrial Estate  
Off Cowbridge Road  
Bridgend  
CF31 3PH

**PROJECT DETAILS**  
Land off A485  
Lumpeter  
CW18 8JN  
SA48 8JN



**Company details:**  
Address - Unit 4, Dales Court Business Center, 95 Dales Road, Ipswich IP1 4JR  
Email - info@empdrainage.co.uk or gna@empdrainage.co.uk  
Contact No - 01473 748 704 or 07595 314 790





**NOTES:**  
The accuracy and content of this drawing are dependent on the original specification and EMP should be consulted before use at other scales.  
Where underground services are shown, all reasonable care has been taken within the original specification and requirements. Before use of this information the user should satisfy themselves of the completeness and accuracy of such detail and consult EMP before undertaking any works. Due to the nature of this work and limitations imposed by ground conditions and the detection equipment, no guarantee can be given that all services have been recorded. PAS128 Type A Trial holes/excavations should be dug at critical locations.  
Our aim is to produce the best possible results for our clients, within the agreed specification and cost constraints. All reasonable care has been taken in the survey detail represented on this drawing. Any discrepancies must be reported immediately to EMP and any other comments or feedback is most welcome.  
Levels shown at kerbs are channel level unless stated.

**Control:** All levels and co-ordinates are related to the datums described.  
The horizontal and vertical control of this survey is based on the Ordnance Survey National Grid and level datum via Network RTK GPS.  
We have applied no reverse scale factor to this survey.

Original Drawing Size: A1

FEATURES:	LEGEND:	BOUNDARY TYPES:	SURVEY STATION:
ACD Drainage Channel	LP Lamp Post	BW Barbed Wire	Survey Station
AV Air Valve	MP Market Post	CB Concrete Block	Fence
AB Air Brick	BB Bore Block	CI Close Boarded	Gate
BD Base Depth	CH Chainlink	CL Concrete	Painted Road Markings
BO Blocked	CF Coating Tiles	CP Concrete Paving Slabs	Edge of Vegetation
PP Power Pole	CP Concrete	CR Corrugated Iron	Kerb/Drop Kerb
BS Bus Stop	CPT Chestnut Paving	IB Iron Blading	Tree
BT British Telecom Cover	CR Chestnut Paving	IR Iron Railings	Banks
CD Cable Duct	CS Concrete	KE Kettle	Building
CL Cable TV Cover	CT Concrete	LA Larch Lap	Overhead Building Detail
CI Cast Iron	CT Concrete	LS Larch Siding	Wall
CR Cast Iron	CT Concrete	LN Linoleum	
DR Drop kerb	CT Concrete	LP Lead Pavers	
DP Drainage Pipe	CT Concrete	RE Render	
DT Drainage Tee	CT Concrete	RS Roof Tiles	
EQ Electricity	CT Concrete	RV Road Valve	
ER End of Trace	CT Concrete	SW Storm Water	
ET Earth Rod	CT Concrete	TS Tarmac	
EV Valve	CT Concrete	TR Tarmac	
EL Eave Level	CT Concrete	TS Tarmac	
FL Flat Roof Level	CT Concrete	TS Tarmac	
HL Head Level	CT Concrete	TS Tarmac	
IL Inset Level	CT Concrete	TS Tarmac	
IP Inset Level	CT Concrete	TS Tarmac	
IS Inset Level	CT Concrete	TS Tarmac	
JA Junction Box	CT Concrete	TS Tarmac	
KO Kerb Outlet	CT Concrete	TS Tarmac	
	CT Concrete	TS Tarmac	

Station	Spot	Height	Notes
113.57	113.63	113.72	
113.44	113.59	113.66	
113.48	113.50	113.55	
113.44	113.49	113.54	
113.44	113.47	113.56	
113.44	113.41	113.52	
113.44	113.40	113.46	
113.44	113.41	113.42	
113.44	113.41	113.43	
113.44	113.41	113.44	
113.44	113.41	113.45	
113.44	113.41	113.46	
113.44	113.41	113.47	
113.44	113.41	113.48	
113.44	113.41	113.49	
113.44	113.41	113.50	
113.44	113.41	113.51	
113.44	113.41	113.52	
113.44	113.41	113.53	
113.44	113.41	113.54	
113.44	113.41	113.55	
113.44	113.41	113.56	
113.44	113.41	113.57	
113.44	113.41	113.58	
113.44	113.41	113.59	
113.44	113.41	113.60	
113.44	113.41	113.61	
113.44	113.41	113.62	
113.44	113.41	113.63	
113.44	113.41	113.64	
113.44	113.41	113.65	
113.44	113.41	113.66	
113.44	113.41	113.67	
113.44	113.41	113.68	
113.44	113.41	113.69	
113.44	113.41	113.70	
113.44	113.41	113.71	
113.44	113.41	113.72	
113.44	113.41	113.73	
113.44	113.41	113.74	
113.44	113.41	113.75	
113.44	113.41	113.76	
113.44	113.41	113.77	
113.44	113.41	113.78	
113.44	113.41	113.79	
113.44	113.41	113.80	
113.44	113.41	113.81	
113.44	113.41	113.82	
113.44	113.41	113.83	
113.44	113.41	113.84	
113.44	113.41	113.85	
113.44	113.41	113.86	
113.44	113.41	113.87	
113.44	113.41	113.88	
113.44	113.41	113.89	
113.44	113.41	113.90	
113.44	113.41	113.91	
113.44	113.41	113.92	
113.44	113.41	113.93	
113.44	113.41	113.94	
113.44	113.41	113.95	
113.44	113.41	113.96	
113.44	113.41	113.97	
113.44	113.41	113.98	
113.44	113.41	113.99	
113.44	113.41	114.00	
113.44	113.41	114.01	
113.44	113.41	114.02	
113.44	113.41	114.03	
113.44	113.41	114.04	
113.44	113.41	114.05	
113.44	113.41	114.06	
113.44	113.41	114.07	
113.44	113.41	114.08	
113.44	113.41	114.09	
113.44	113.41	114.10	
113.44	113.41	114.11	
113.44	113.41	114.12	
113.44	113.41	114.13	
113.44	113.41	114.14	
113.44	113.41	114.15	
113.44	113.41	114.16	
113.44	113.41	114.17	
113.44	113.41	114.18	
113.44	113.41	114.19	
113.44	113.41	114.20	
113.44	113.41	114.21	
113.44	113.41	114.22	
113.44	113.41	114.23	
113.44	113.41	114.24	
113.44	113.41	114.25	
113.44	113.41	114.26	
113.44	113.41	114.27	
113.44	113.41	114.28	
113.44	113.41	114.29	
113.44	113.41	114.30	
113.44	113.41	114.31	
113.44	113.41	114.32	
113.44	113.41	114.33	
113.44	113.41	114.34	
113.44	113.41	114.35	
113.44	113.41	114.36	
113.44	113.41	114.37	
113.44	113.41	114.38	
113.44	113.41	114.39	
113.44	113.41	114.40	
113.44	113.41	114.41	
113.44	113.41	114.42	
113.44	113.41	114.43	
113.44	113.41	114.44	
113.44	113.41	114.45	
113.44	113.41	114.46	
113.44	113.41	114.47	
113.44	113.41	114.48	
113.44	113.41	114.49	
113.44	113.41	114.50	
113.44	113.41	114.51	
113.44	113.41	114.52	
113.44	113.41	114.53	
113.44	113.41	114.54	
113.44	113.41	114.55	
113.44	113.41	114.56	
113.44	113.41	114.57	
113.44	113.41	114.58	
113.44	113.41	114.59	
113.44	113.41	114.60	
113.44	113.41	114.61	
113.44	113.41	114.62	
113.44	113.41	114.63	
113.44	113.41	114.64	
113.44	113.41	114.65	
113.44	113.41	114.66	
113.44	113.41	114.67	
113.44	113.41	114.68	
113.44	113.41	114.69	
113.44	113.41	114.70	
113.44	113.41	114.71	
113.44	113.41	114.72	
113.44	113.41	114.73	
113.44	113.41	114.74	
113.44	113.41	114.75	
113.44	113.41	114.76	
113.44	113.41	114.77	
113.44	113.41	114.78	
113.44	113.41	114.79	
113.44	113.41	114.80	

Quality Level	Description
Q1	A utility is expected to exist but cannot be detected - (AS) Assumed route
Q2	Horizontal location only using one geophysical technique
Q3	Horizontal location only using two geophysical techniques eg EM, or Radar
Q4	Horizontal and vertical location only using two geophysical techniques eg EM, and Radar
Q5	Service verified in an open excavation, include an inspection chamber (where applicable) at the point where the service enters / exits the ground. Visually confirmation

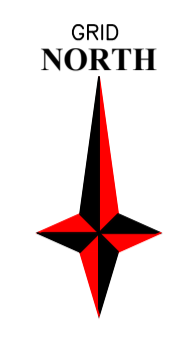
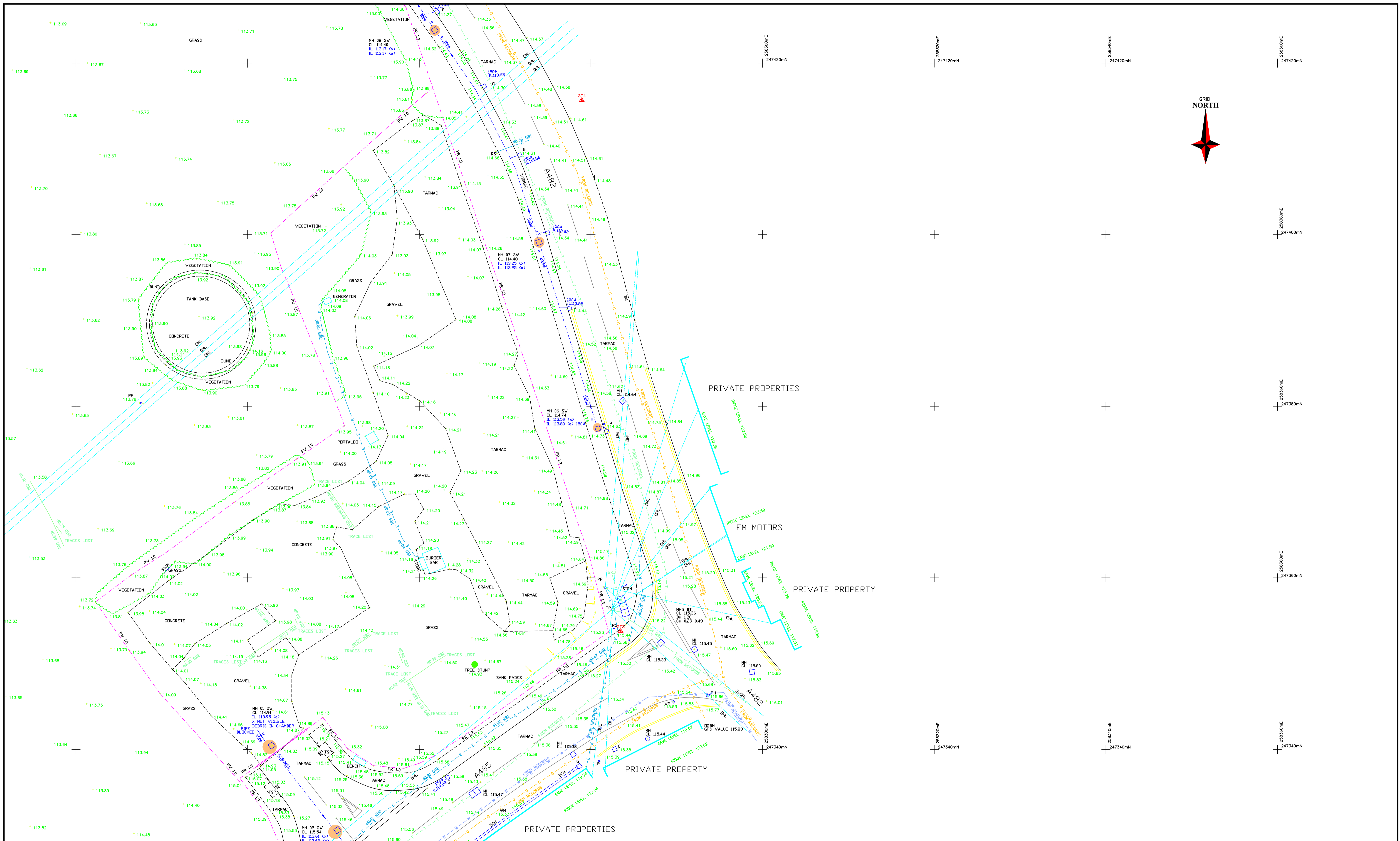
Job No.	Surveyor	Checked	Date	Scale
1118	M.Cable	M.Wood	Aug 2024	1:200

Drawing No.	Revision
1118/T&S/02-04	-

**CLIENT DETAILS**  
Lidl Waterton Industrial Estate  
Off Cowbridge Road  
Bridgend  
CF31 3PH

**PROJECT DETAILS**  
Land off A485  
Lumpeter  
GW18RN  
SA48 8JN

Company details:  
Address - Unit 4, Dales Court Business Center, 95 Dales Road, Ipswich IP1 4JR  
Email - info@empdrainage.co.uk or gna@empdrainage.co.uk  
Contact No - 01473 748 704 or 07595 314 790



Company details:  
 Address - Unit 4, Dales Court Business Center, 95 Dales Road, Ipswich IP1 4JR  
 Email - info@empdrainage.co.uk or gna@empdrainage.co.uk  
 Contact No - 01473 748 704 or 07595 314 790

**NOTES:**  
 The accuracy and content of this drawing are dependent on the original specification and EMP should be consulted before use at other scales.  
 Where underground services are shown all reasonable care has been taken within the original specification and accuracy. Before use of this information the user should satisfy themselves of the completeness and accuracy of such detail and consult EMP before undertaking any works. Due to the nature of this work and limitations imposed by ground conditions and the detection equipment, no guarantee can be given that all services have been recorded. PAS128 Type A Trial holes/excavations should be dug at critical locations.  
 Our aim is to produce the best possible results for our clients, within the agreed specification and cost constraints. All reasonable care has been taken in the survey detail represented on this drawing. Any discrepancies must be reported immediately to EMP and any other comments or feedback is most welcome.  
 Levels shown at kerbs are channel level unless stated.  
**Control:** All levels and co-ordinates are related to the datums described.  
 The horizontal and vertical control of this survey is based on the Ordnance Survey National Grid and level datum via Network RTK GPS.  
 We have applied no reverse scale factor to this survey.

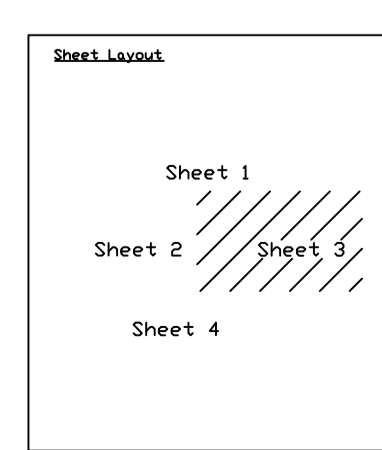
Original Drawing Size: A1

- LEGEND**
- |  |  |   |   |  |
|--|--|---|---|--|
| <p><b>FEATURES:</b></p> <ul style="list-style-type: none"> <li>ACD Drainage Channel</li> <li>AV Air Valve</li> <li>AB Air Brick</li> <li>BO Blocked</li> <li>BD Base Depth</li> <li>PP Power Pole</li> <li>BS Bus Stop</li> <li>RT Road Traffic Light</li> <li>CD Cable Duct</li> <li>CL Cable TV Cover</li> <li>DIV Diversion</li> <li>DPD Damp Proof Course</li> <li>ED End of Trace</li> <li>ET Earth Road</li> <li>ER Fire Hydrant</li> <li>GV Gas Valve</li> <li>GL Gully</li> <li>IC Inspection Cover</li> <li>IL Inlet Level</li> <li>IS Inlet</li> <li>JKS Junction Box</li> <li>KO Kerb Outlet</li> </ul> | <p><b>Surfaces &amp; Finishes:</b></p> <ul style="list-style-type: none"> <li>BR Brick</li> <li>CB Concrete</li> <li>CL Concrete</li> <li>CP Concrete Paving Slabs</li> <li>BO Bitumen</li> <li>LN Linoleum</li> <li>RP Road Pavers</li> <li>RE Render</li> <li>TA Tarmac</li> <li>TS Textured Surface Paving</li> </ul> | <p><b>Boundary Types:</b></p> <ul style="list-style-type: none"> <li>BW Barbed Wire</li> <li>CB Close Boarded</li> <li>CI Chain Link</li> <li>CP Composite</li> <li>CR Concrete Paving</li> <li>IR Iron Railings</li> <li>KE Kerb</li> <li>LA Larch Lapp</li> <li>PA Palisade</li> <li>PS Post &amp; Rail</li> <li>PS Post &amp; Wire</li> <li>TK Timber Kerb</li> <li>TR Tarmac</li> <li>TS Textured Surface Paving</li> <li>VSP Vehicle Safety Fence</li> <li>WM Wire Mesh Fence</li> </ul> | <p><b>Services:</b></p> <ul style="list-style-type: none"> <li>CATV cables</li> <li>Combined Sewer</li> <li>Data cables</li> <li>Electric cables</li> <li>Foul water</li> <li>Gas pipes</li> <li>Empty duct</li> <li>Storm water</li> <li>Telecom cab.</li> <li>Unidentified</li> <li>Unidentified Radar Trace</li> <li>Water pipes</li> <li>Pipe Diameter/Flow</li> <li>Overhead Lines</li> <li>Service depth</li> </ul> | <p><b>Survey Station</b></p> <ul style="list-style-type: none"> <li>Survey Station</li> <li>Fence</li> <li>Gate</li> <li>Painted Road Markings</li> <li>Edge of Vegetation</li> <li>Kerb/Drop Kerb</li> <li>Tree</li> <li>Banks</li> <li>Building</li> <li>Overhead Building Detail</li> <li>Wall</li> </ul> |
|--|--|---|---|--|

Station	Sprinkle	Flow	Depth	Flow	Rate
S1	0.00	0.00	0.00	0.00	0.00
S2	0.00	0.00	0.00	0.00	0.00
S3	0.00	0.00	0.00	0.00	0.00
S4	0.00	0.00	0.00	0.00	0.00

**PAS 128:2014 Quality Level Guide**

Quality Level	Description
QA	A utility is expected to exist but cannot be detected - (A1) Assumed route
QB	No depth information - (A2)
QC	Horizontal location only using one geophysical technique - (B1, or B2)
QD	Horizontal and vertical location only using one geophysical technique - (B1, or B2)
QE	Horizontal and vertical location only using two geophysical techniques - (B1, or B2)
QF	Service verified in an open excavation, inside an inspection chamber, or at the point from the service enters / exits the ground. Visually confirmed.



Job No.	Surveyor	Checked	Date	Scale
1118	M.Cable	M.Wood	Aug 2024	1:200

Drawing No.	Revision
1118/T&S/03-04	

Rev	Job No.	Date	Revision Detail	Surveyor	Checked



**CLIENT DETAILS**  
 Ltd Waterton Industrial Estate  
 Off Cowbridge Road  
 Bridgend  
 CF31 3PH

**PROJECT DETAILS**  
 Land off A485  
 Lumpeter  
 GWR18RN  
 SA48 8JN

