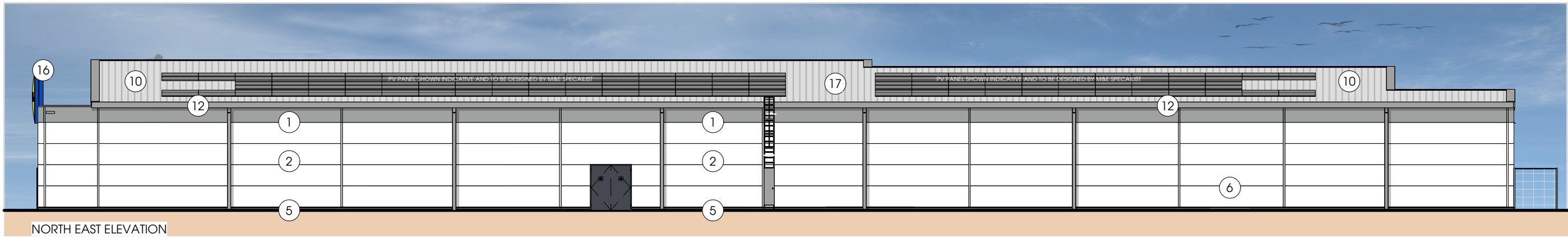
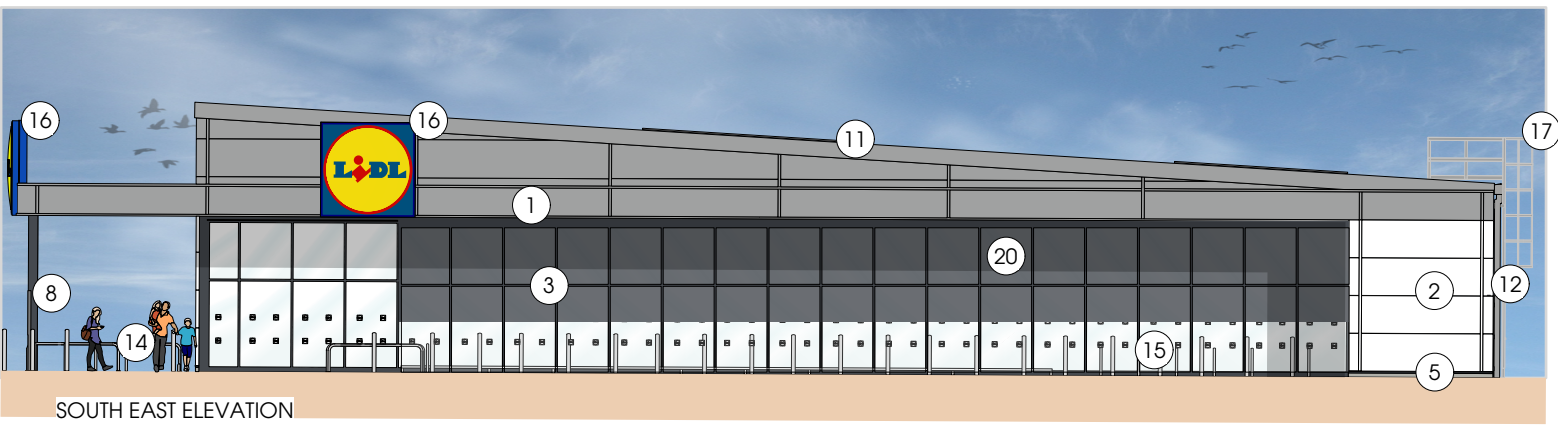


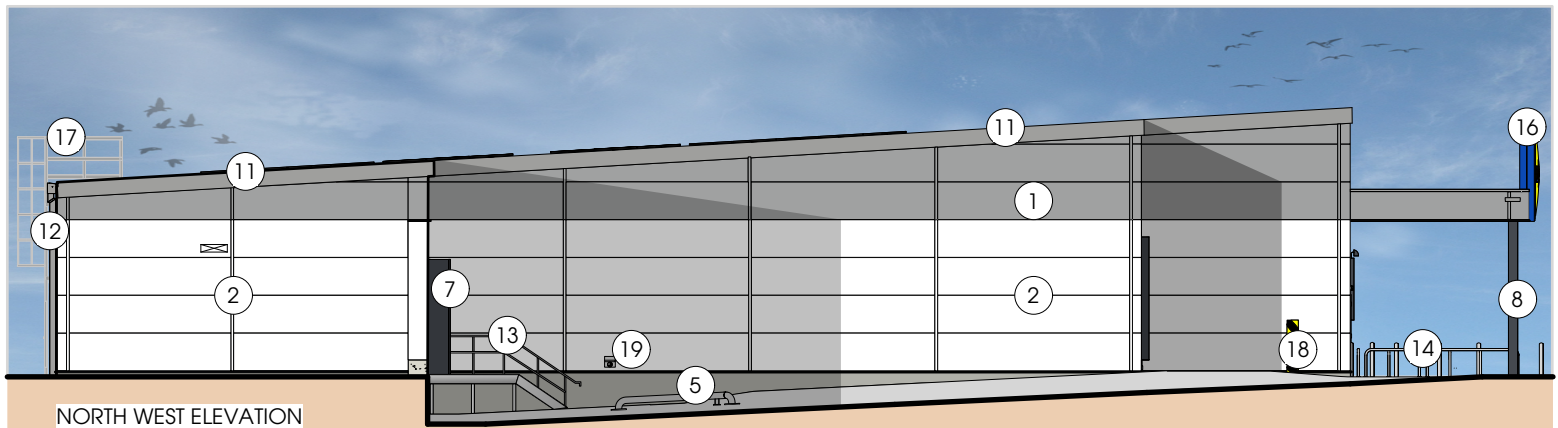
SOUTH WEST ELEVATION



NORTH EAST ELEVATION



SOUTH EAST ELEVATION



NORTH WEST ELEVATION

**MATERIALS KEY**

- 1 INSULATED METAL CLADDING PANELS - COLOUR: GREY (RAL 9006)
- 2 INSULATED METAL CLADDING PANELS - COLOUR: WHITE (RAL 9010)
- 3 CURTAIN WALLING - DOUBLE GLAZED UNITS - COLOUR: GREY (RAL 7024)
- 4 ENTRANCE DOORS - DOUBLE GLAZED UNITS - COLOUR: GREY (RAL 7024)
- 5 LOW LEVEL RENDER - COLOUR: GREY (RAL 7038)
- 6 POWDER COATED STEEL DOORS - COLOUR: GREY (RAL 7024)
- 7 SECTIONAL DOOR - COLOUR: GREY (RAL 7024)
- 8 CANOPY COLUMN - COLOUR: GREY (RAL 7024)
- 9 NON OPENABLE FIXED SAFETY GLASS WINDOWS - COLOUR: GREY (RAL 7024)
- 10 METAL COMPOSITE INSULATED ROOF PANELS
- 11 STEEL COPING FLASHING TO ROOF PERIMETER - COLOUR: GREY (RAL 9006) TO MATCH CLADDING.
- 12 ALUMINIUM GUTTERS AND RAIN WATER PIPES - COLOUR: GREY (RAL 9006) TO MATCH CLADDING.
- 13 GALVANISED METAL DRIVERS STEPS, STAIRCASE AND BALLUSTERS WITH HANDRAILS. ALL STEPS TO BE CONSTRUCTED IN ACCORDANCE WITH BUIDLING REGS PART K.
- 14 STAINLESS STEEL TUBULAR TROLLEY GUIDES (MARINE GRADE 316) SPACES FOR WHEELCHAIR SHOPPING TROLLEYS AND TROLLEYS WITH BABY SEATS. FIXED WITH CONCRETE FOUNDATION.
- 15 STAINLESS STEEL CYCLE STANDS, 750mm HIGH, ROOT FIXED TO CONCRETE FOUNDATION.
- 16 ADVERTISING SIGNAGE INDICATIVE ONLY.
- 17 ROOF ACCESS LADDER
- 18 CONCRETE FILLED GALVANISED STEEL HGV BOLLARD PAINTED BLACK & YELLOW AT 45DEG.
- 19 WALL-MOUNTED ASH TRAY SHOWN AS INDICATIVE ONLY, TO BE LOCATED CLOSE TO DRIVER'S STAIR
- 20 ROLLER SHUTTER BLIND - COLOUR: GREY (RAL 7024)



Scale bar added, north point adjusted, general


Rev.	Date	Description	Drawn
F	23/01/2025	annotation moved.	KA
E	20/09/2024	elevation	KA

**htcarchitects**

York Place Studio  
8 Britannia Street  
Leeds  
LS1 2DZ  
T:(0113) 244 3457

W: www.htcarchitects.co.uk  
E: info@htcarchitects.co.uk

client  
**Lidl GB Ltd.**



project  
**Commercial Street  
Risca**

drawing title  
**GA Elevations**

date **September 2024**  
status **Planning**  
scale **1:200 @ A3**  
drawn **BM** checked **PH**  
job no. **3067** dwg no. **P200** rev. **F**