

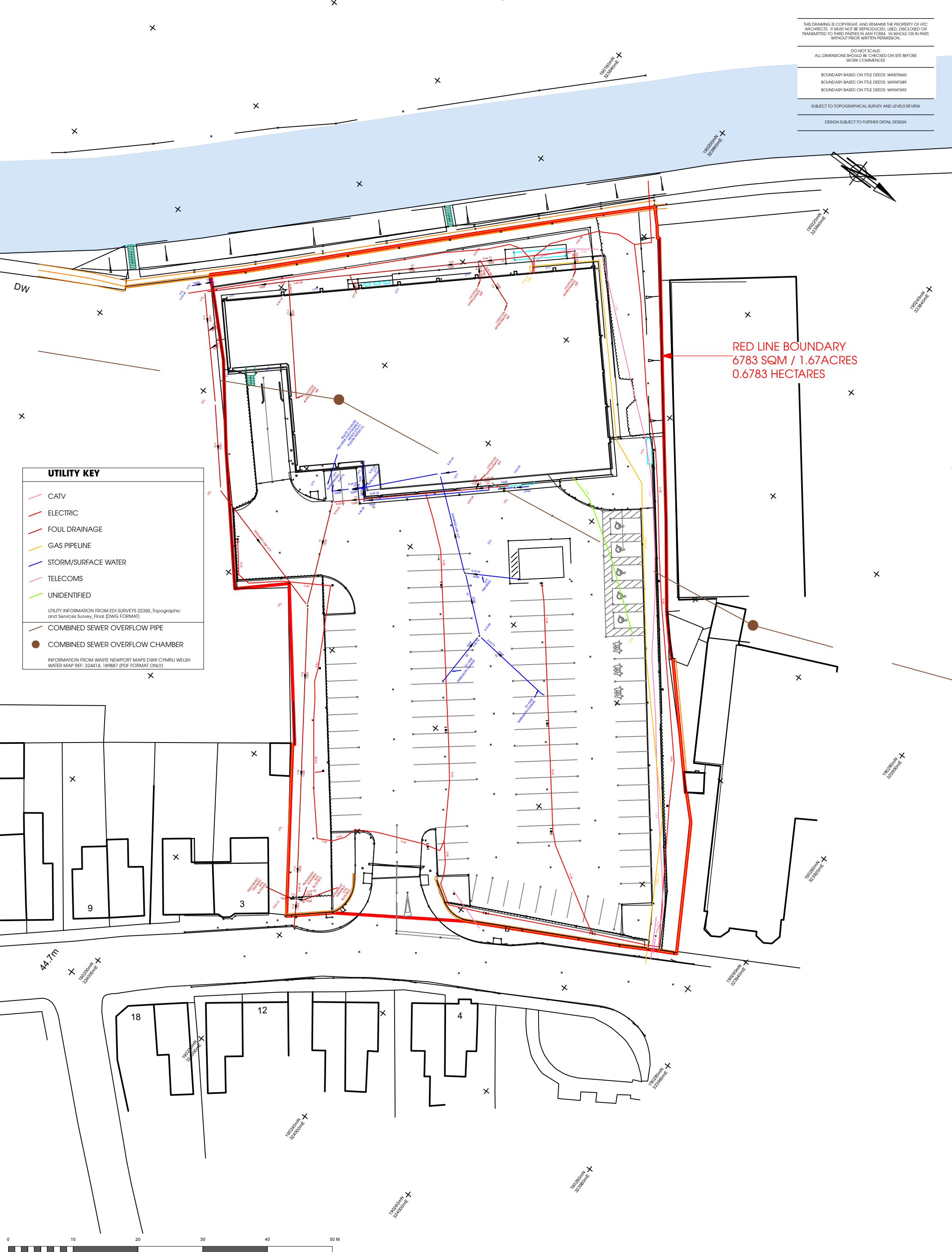
THIS DRAWING IS COPYRIGHT AND REMAINS THE PROPERTY OF HTC ARCHITECTS. IF MUST NOT BE REPRODUCED, USED, DISCLOSED OR TRANSMITTED TO THIRD PARTIES IN ANY FORM, IN WHOLE OR IN PART, WITHOUT PRIOR WRITTEN PERMISSION.

DO NOT SCALE!
ALL DIMENSIONS SHOULD BE CHECKED ON SITE BEFORE WORK COMMENCES

BOUNDARY BASED ON TITLE DEEDS: WA4870660
BOUNDARY BASED ON TITLE DEEDS: WA947689
BOUNDARY BASED ON TITLE DEEDS: WA947692

SUBJECT TO TOPOGRAPHICAL SURVEY AND LEVELS REVIEW

DESIGN SUBJECT TO FURTHER DETAIL DESIGN



RED LINE BOUNDARY
6783 SQM / 1.67 ACRES
0.6783 HECTARES

UTILITY KEY

- CATV
- ELECTRIC
- FOUL DRAINAGE
- GAS PIPELINE
- STORM/SURFACE WATER
- TELECOMS
- UNIDENTIFIED

UTILITY INFORMATION FROM EDI SURVEYS 22350_Topographic and Services Survey_Final (DWG FORMAT)

- COMBINED SEWER OVERFLOW PIPE
- COMBINED SEWER OVERFLOW CHAMBER

INFORMATION FROM WASTE NEWPORT MAPS DWR CYMRU WELSH WATER MAP REF: 324414_189887 (PDF FORMAT ONLY)



htcarchitects

York Place Studio
8 Britannia Street
Leeds
LS1 2DZ
T: (0113) 244 3457
W: www.htcarchitects.co.uk
E: info@htcarchitects.co.uk

client
Lidl GB Ltd.



project
Commercial Street
Risca

drawing title
Existing Site Plan - Utility
Overlay

date August 2024

status Feasibility

scale 1:500 @ A3

drawn KA checked BM

job no. 2966 dwg no. P414 rev.

Rev.	Date	Description	Drawn